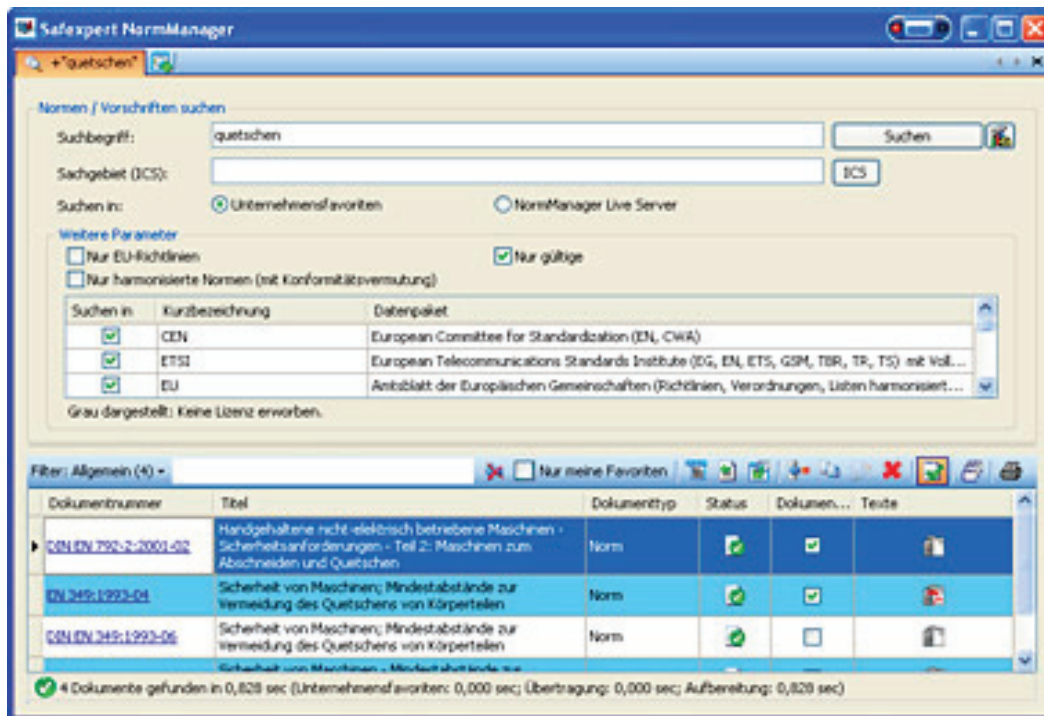


# Safexpert Version 5.5 – The Most Important Innovations

## The new NormMANAGER



- The search is performed in the Safexpert Standards and Specifications Database on the Internet.
- Continuous monthly update (performed approx. 6 times a year).

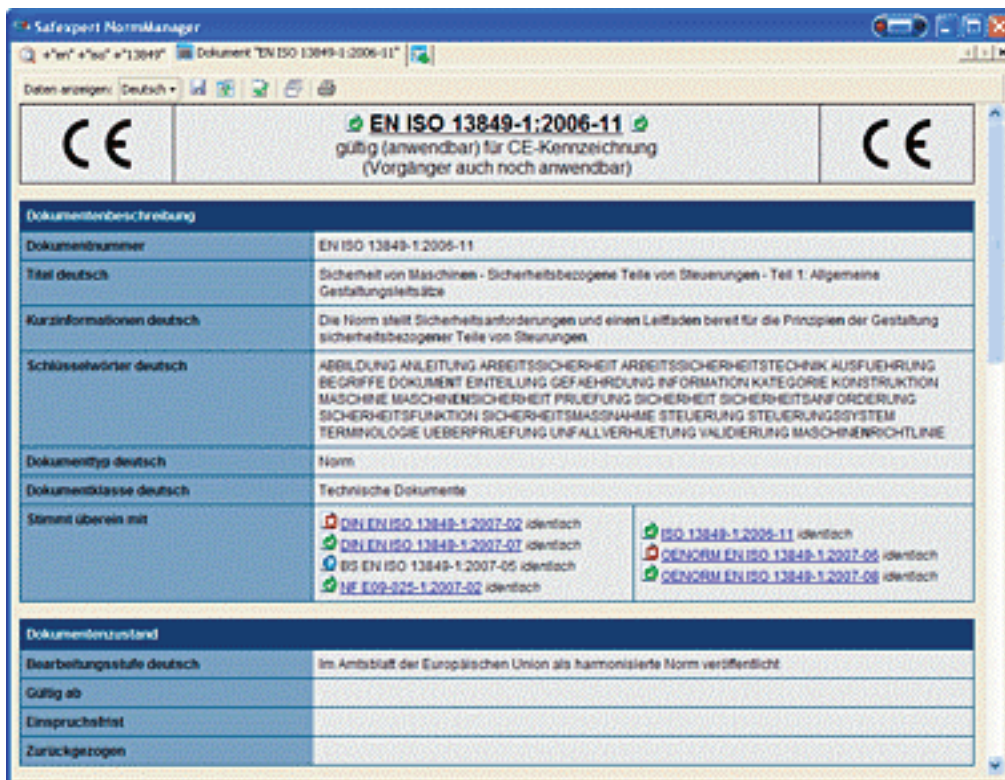
The NormManager is already included in Safexpert V5.5 Compact and Professional, but it can also be ordered for SE Basic V5.5.










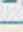






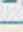






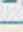

The NormMANAGER will now be opened instead of the “ADR” Register.

- Instead of the previous “SDR (System Documents Registers)”, data packages will now be offered for the NormManager Live Server:
  - SDR-EU will be replaced by MRL-EU.
  - SDR-DE will be replaced by MRL-DE.
  - When ordering Safexpert with data package MRL-EU, access is provided for 1 month to the Safexpert Online Server, and you can therefore install your MRL-EU

(previously SDR) data. With a corresponding maintenance contract, e.g. for MRL-EU, you would be able to update the data in your projects at all times. The new search mask on the **NormManager Live Server** provides you with transparent and intelligent search results. The search results can in turn be filtered in two ways. The detail data is displayed on its own tab with the documents link in the search results.

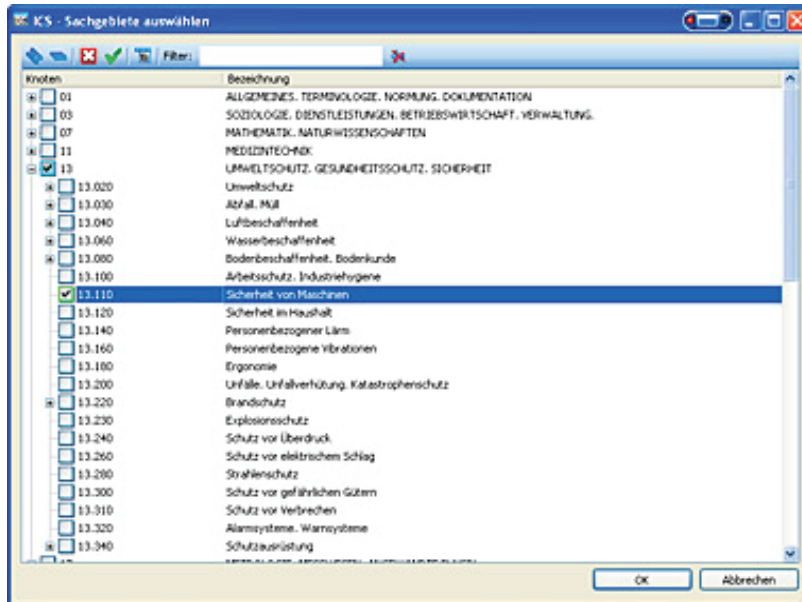
- Important information on the document status.
- Whether or not this is relevant for the CE symbol.
- Notes on predecessor and/or successor documents.
- Information on compliance with international requirements.



 <span style="margin-left: 100px;">  <b>EN ISO 13849-1:2006-11</b>  </span> 									
gültig (anwendbar) für CE-Kennzeichnung (Vorgänger auch noch anwendbar)									
<b>Dokumentenbeschreibung</b>									
Dokumentnummer	EN ISO 13849-1:2006-11								
Titel deutsch	Sicherheit von Maschinen - Sicherheitsbezogene Teile von Steuerungen - Teil 1: Allgemeine Gestaltungsleitfäden								
Kurzinformationen deutsch	Die Norm stellt Sicherheitsanforderungen und einen Leitfaden bereit für die Prinzipien der Gestaltung sicherheitsbezogener Teile von Steuerungen.								
Schlüsselwörter deutsch	ABBILDUNG ANLEITUNG ARBEITSSICHERHEIT ARBEITSSICHERHEITSTECHNIK AUSFÜHRUNG BEGRIFFE DOKUMENT EINTEILUNG GEFÄHRDUNG INFORMATION KATEGORIE KONSTRUKTION MASCHINE MASCHINENSICHERHEIT PRÜFUNG SICHERHEIT SICHERHEITSANFORDERUNG SICHERHEITSFUNKTION SICHERHEITSMASSNAHME STEUERUNG STEUERUNGSSYSTEM TERMINOLOGIE ÜBERPRÜFUNG UNFALLVERHÜTUNG VALIDIERUNG MASCHINENRICHTLINE								
Dokumenttyp deutsch	Norm								
Dokumentklasse deutsch	Technische Dokumente								
Stimmt überein mit	<table border="0"> <tr> <td> <a href="#">DIN EN ISO 13849-1:2007-02</a> identisch</td> <td> <a href="#">ISO 13849-1:2006-11</a> identisch</td> </tr> <tr> <td> <a href="#">DIN EN ISO 13849-1:2007-07</a> identisch</td> <td> <a href="#">CENORM EN ISO 13849-1:2007-06</a> identisch</td> </tr> <tr> <td> <a href="#">BS EN ISO 13849-1:2007-05</a> identisch</td> <td> <a href="#">CENORM EN ISO 13849-1:2007-06</a> identisch</td> </tr> <tr> <td> <a href="#">NF E09-024-1:2007-02</a> identisch</td> <td></td> </tr> </table>	 <a href="#">DIN EN ISO 13849-1:2007-02</a> identisch	 <a href="#">ISO 13849-1:2006-11</a> identisch	 <a href="#">DIN EN ISO 13849-1:2007-07</a> identisch	 <a href="#">CENORM EN ISO 13849-1:2007-06</a> identisch	 <a href="#">BS EN ISO 13849-1:2007-05</a> identisch	 <a href="#">CENORM EN ISO 13849-1:2007-06</a> identisch	 <a href="#">NF E09-024-1:2007-02</a> identisch	
 <a href="#">DIN EN ISO 13849-1:2007-02</a> identisch	 <a href="#">ISO 13849-1:2006-11</a> identisch								
 <a href="#">DIN EN ISO 13849-1:2007-07</a> identisch	 <a href="#">CENORM EN ISO 13849-1:2007-06</a> identisch								
 <a href="#">BS EN ISO 13849-1:2007-05</a> identisch	 <a href="#">CENORM EN ISO 13849-1:2007-06</a> identisch								
 <a href="#">NF E09-024-1:2007-02</a> identisch									
<b>Dokumentenstatus</b>									
Bearbeitungsstufe deutsch	Im Amtsblatt der Europäischen Union als harmonisierte Norm veröffentlicht								
Gültig ab									
Einspruchsfrist									
Zurückgezogen									

## NormManager – Search according to ICS subject areas

Here you will see which standards were assigned to specific subject areas.

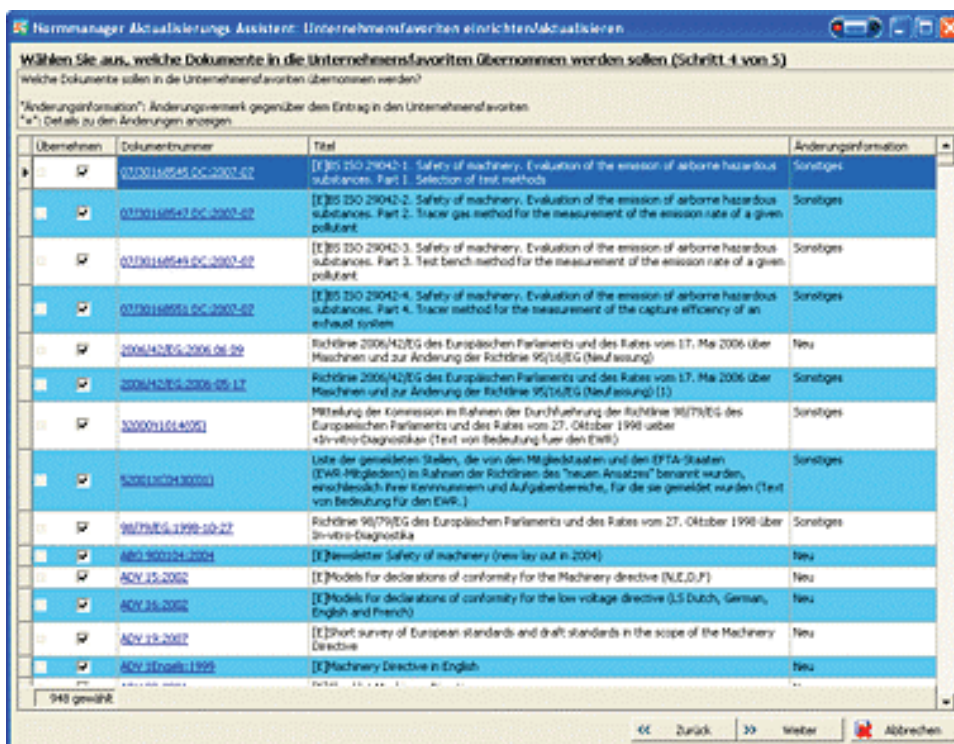


## NormMANAGER – Setting company favorites

A preselection, known as the “**Company Favorites**”, can be made by a standards specialist from the enormous range of standards on the Safexpert “**NormManager Live Server**” in order to limit the frequently very extensive search results.

### Personal Favorites

Important standards can be specified by the user, just as before. These are now called the “**Personal Favorites**”.



the **sensor** people

**New:** During the updating run, Safexpert uses the “**Personal Favorites**” to determine which standards changes are relevant for which people in the company, who are then informed about these changes by e-mail as required.

**New:** During the updating run, Safexpert checks whether current projects or template projects are affected by the changes and shows these in an easy-to-follow and transparent list.

## Further Innovations in Safexpert V 5.5

- Information on the responsible Safexpert system administrator can now be entered and viewed in the “? - Database” main menu.
- The users registered in Safexpert can be viewed via the “Tools – Registered Users” main menu item, just as before. The employee administration can now be opened in the “Registered Users” window with the “Employees” button.
- The “Plugins” item is located in the main menu under “?”. This menu item is inactive if there are no plugins available.