

Safexpert V 7.0 - What's New?

- Full support of the new machinery directive 2006/42/EC including CE guide, risk assessment, checklists acc. to Annex VII, internal manufacturing checks,...
- Interface to BG software program SISTEMA for designing safe controls acc. to EN ISO 13849-1
- New hazards list with updated cross-references in accordance with current standards

Important changes in detail

Project manager

- Upon opening Safexpert, a check is performed based on the given user and across projects to determine whether existing tasks, that were created in the hazard analysis or risk assessment, have not yet been completed.

- Upon creation of a project, the user is now prompted as to the planned date of placement on the market. If this lies before midnight on December 29, 2009, the CE guide is opened acc. to machinery directive 98/37/EC, otherwise the new CE guide acc. to machinery directive 2006/42/EC is opened.

* Scheduled date of distribution:	31.12.2009	▼
After the planned date of the placing on the market falls before or after 2009-12-29, the following must be applied:		
<input type="radio"/> Machinery Directive 98/37/EU		
<input checked="" type="radio"/> Machinery Directive 2006/42/EC		

- The terminology used in Safexpert has been adapted to the new machinery directive. For projects that were created according to the old machinery directive 98/37/EC, the previous terminology is retained at key points.

- Limits of the machinery are now defined in a separate tab. According to EN ISO 12100-1, section 5, the data fields "Space limits" and "Other limits" have been added.

CE guide acc. to the new machinery directive 2006/42/EC

A central innovation in Safexpert 7.0 is the new CE guide.

The old CE guide acc. to machinery directive 98/37/EC is retained in its original form to allow projects that were created according to this guide to be opened as before:

The new CE guide contains, among others, the following changes over the previous version:

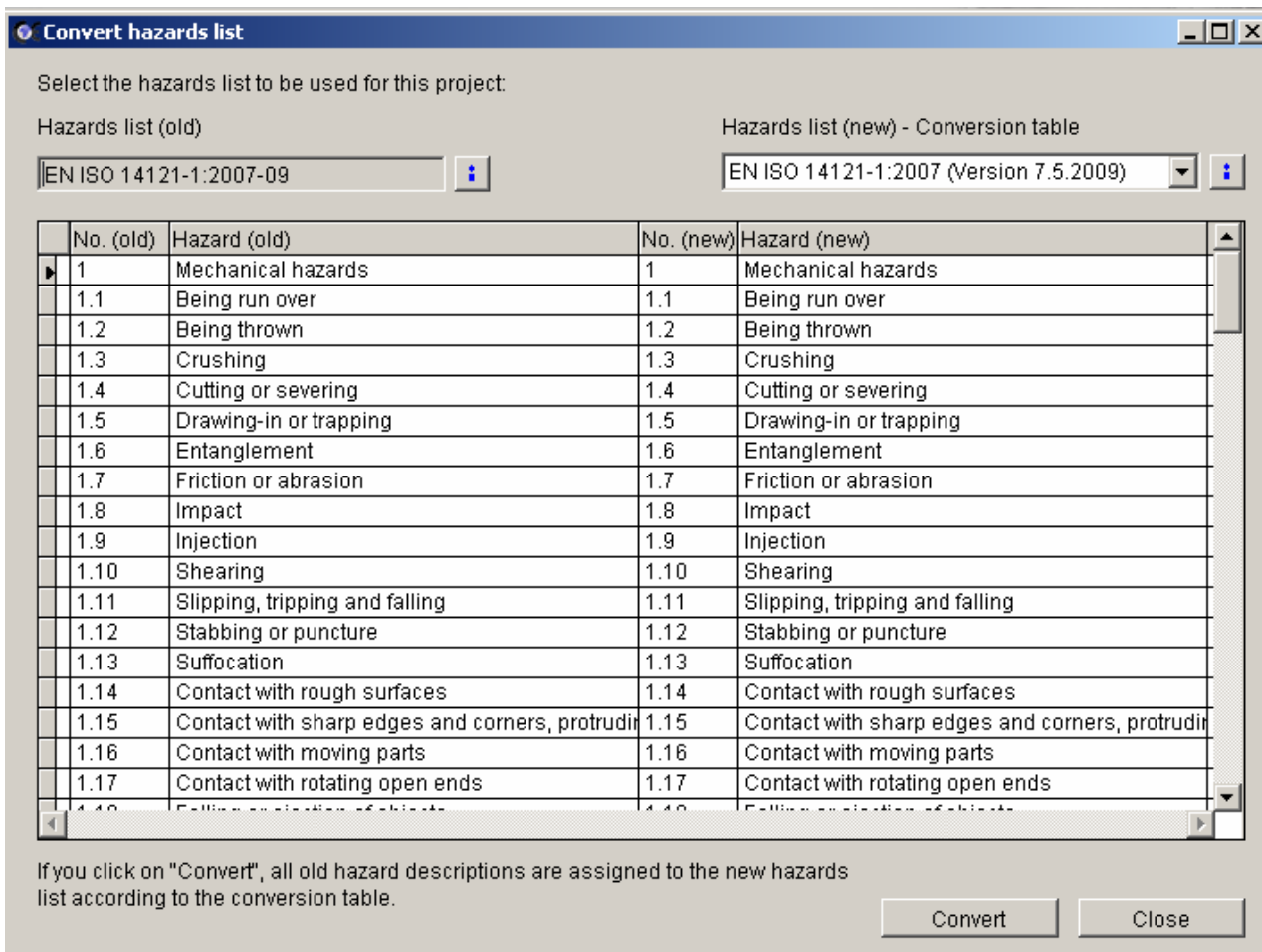
- Classification of the machine according to the machinery directive
- Process implemented for "partly completed machinery"
- Risk assessment instead of hazard analysis
- New checklist for compiling the technical documentation for machinery according to Annex VII A
- New checklist for compiling the technical documentation for "partly completed machinery" according to Annex VII B
- New checklists for compiling the operating instructions and installation instructions
- New "Carrying out an internal check" tab implemented
- The variants for Annex IV, machinery, were amended

Hazard analysis / risk assessment

The most important new features are:

- New hazards list EN ISO 14121-1:2007 (Version 7.5.2009) as replacement for the hazards list EN ISO 14121-1:2007-09 from July 14, 2008

Important notice: The cross-references to important passages in standards and directives have been updated. Upon opening projects that have not yet been completed, a check is automatically performed to determine whether the projects were created on the basis of an outdated system hazards list (e.g. EN 1050). Of course, Safexpert provides an option here as well for automatically converting the hazards lists. Conversion occurs on the basis of the supplied conversion table:



Select the hazards list to be used for this project:

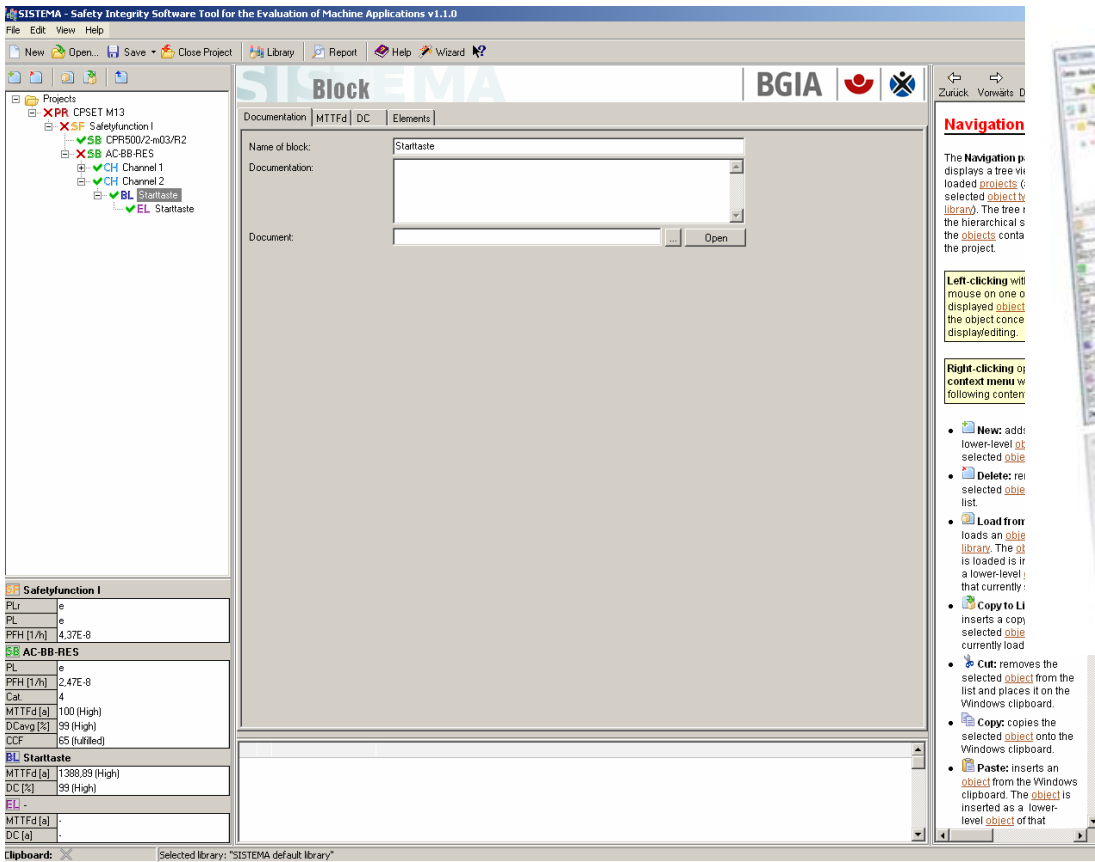
Hazards list (old) Hazards list (new) - Conversion table

No. (old)	Hazard (old)	No. (new)	Hazard (new)
1	Mechanical hazards	1	Mechanical hazards
1.1	Being run over	1.1	Being run over
1.2	Being thrown	1.2	Being thrown
1.3	Crushing	1.3	Crushing
1.4	Cutting or severing	1.4	Cutting or severing
1.5	Drawing-in or trapping	1.5	Drawing-in or trapping
1.6	Entanglement	1.6	Entanglement
1.7	Friction or abrasion	1.7	Friction or abrasion
1.8	Impact	1.8	Impact
1.9	Injection	1.9	Injection
1.10	Shearing	1.10	Shearing
1.11	Slipping, tripping and falling	1.11	Slipping, tripping and falling
1.12	Stabbing or puncture	1.12	Stabbing or puncture
1.13	Suffocation	1.13	Suffocation
1.14	Contact with rough surfaces	1.14	Contact with rough surfaces
1.15	Contact with sharp edges and corners, protrusions	1.15	Contact with sharp edges and corners, protrusions
1.16	Contact with moving parts	1.16	Contact with moving parts
1.17	Contact with rotating open ends	1.17	Contact with rotating open ends
1.18	Falling or projection of objects	1.18	Falling or projection of objects

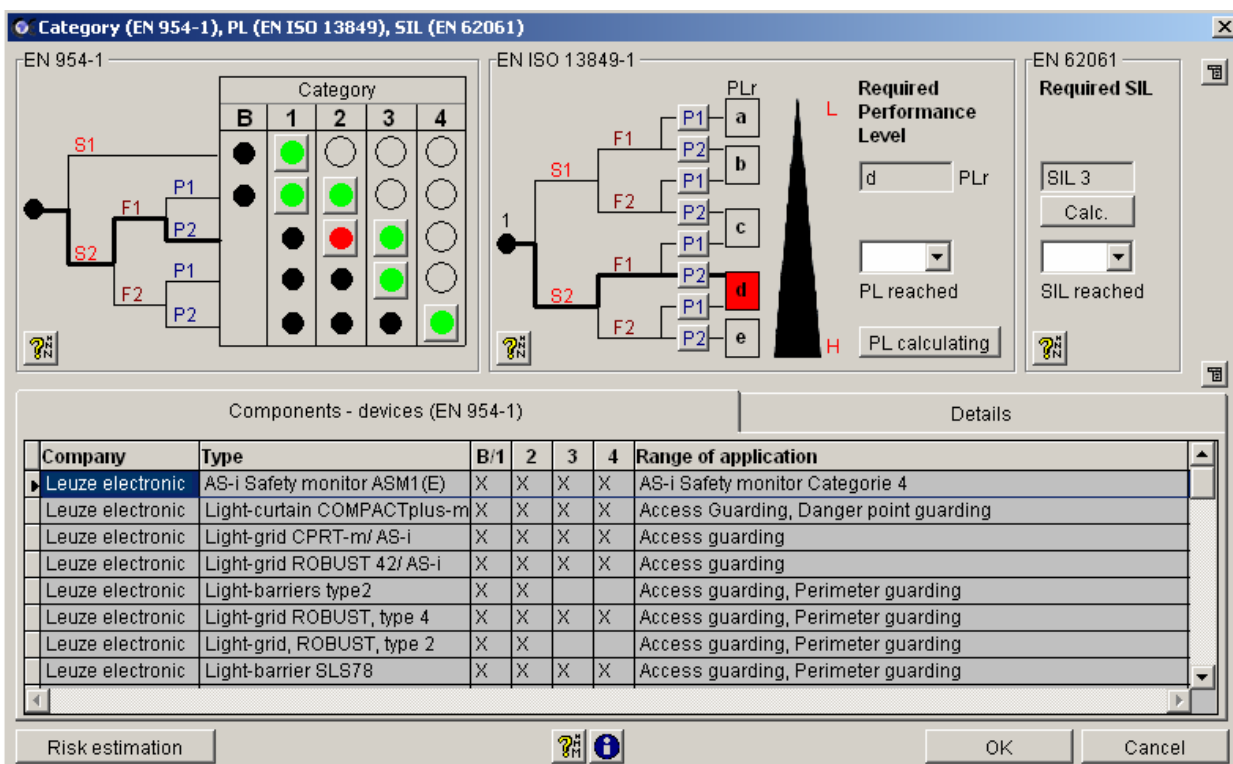
If you click on "Convert", all old hazard descriptions are assigned to the new hazards list according to the conversion table.

Interface to SISTEMA

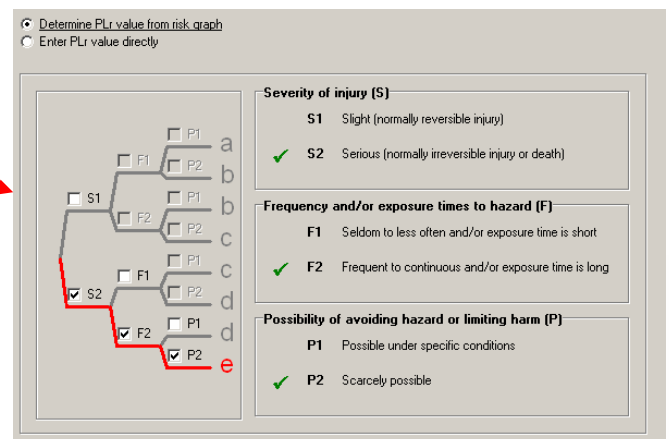
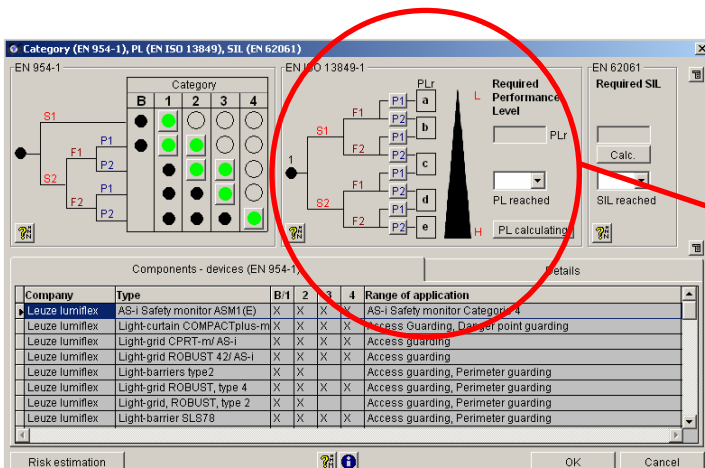
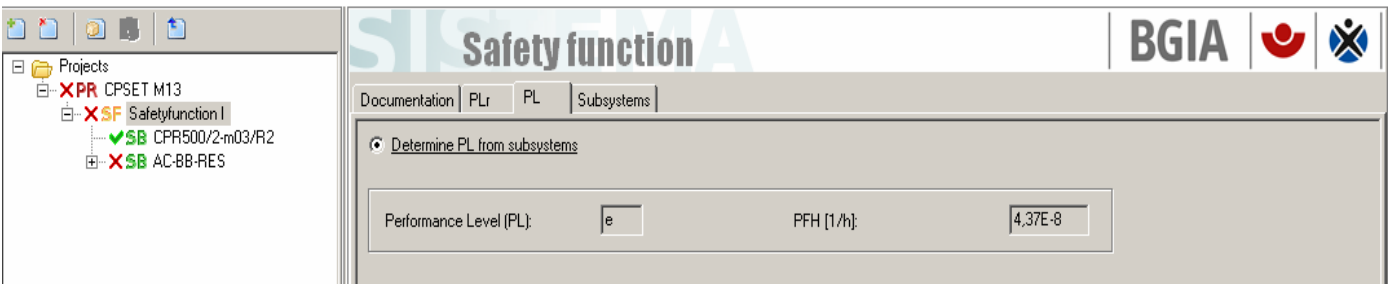
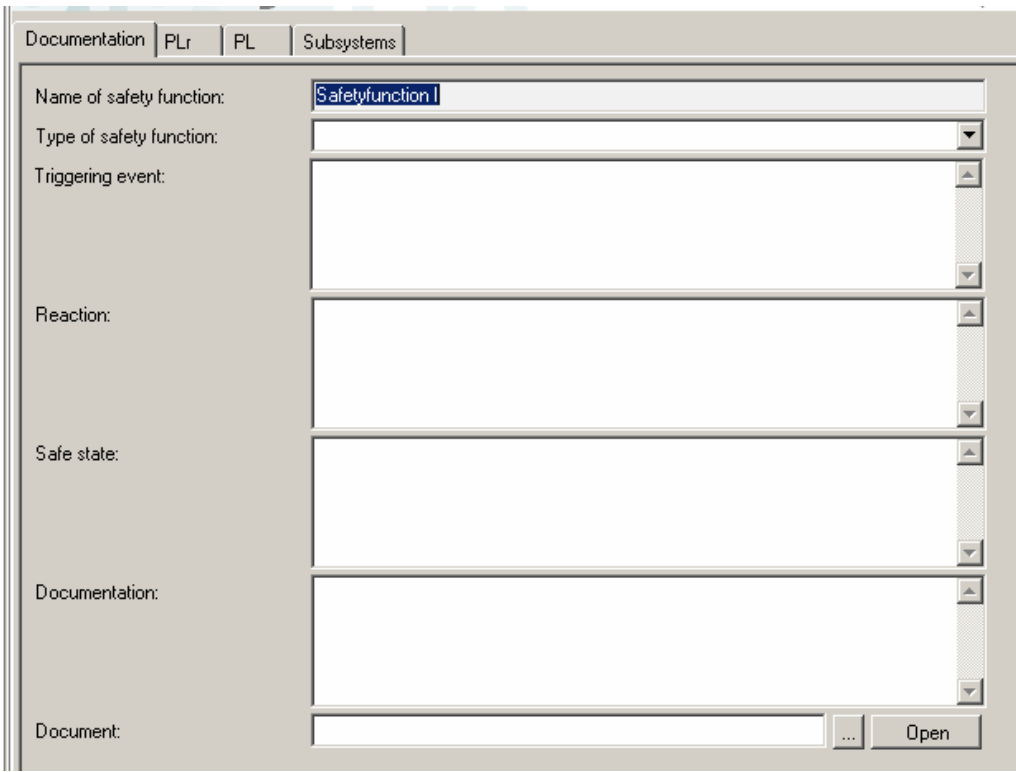
SISTEMA is a software program developed by the BGIA for designing controls acc. to EN ISO 13849-1 and is available at no cost (see www.dguv.de/bgia/de/prs/softwa/sistema).



SISTEMA is called up in Safexpert at the point at which the required and the achieved Performance Level acc. to EN ISO 13849-1 are entered.



Clicking "PL calculating" opens SISTEMA, automatically creates a project and transfers various data to the SISTEMA project: In addition, used safety components are transferred from Safexpert as a "subsystem" (SB) to SISTEMA and accepted back from SISTEMA. The SISTEMA data is stored directly in the Safexpert database. As a result, the data is again available even for exported projects following an import.



Internal checks on the manufacture of machinery

Annex VIII of the new machinery directive 2006/42/EC defines which measures are to be performed within the scope of the "internal checks on the manufacture of machinery".

Functionality:

- In the checklist in tab 5, the technical documents are compiled.
According to this list, the program checks and documents in tab 7 whether the machinery conforms with these documents.
- A check is also performed to determine whether there are any tasks that have not yet been completed. Tasks can be created within the hazard analysis or risk assessment.

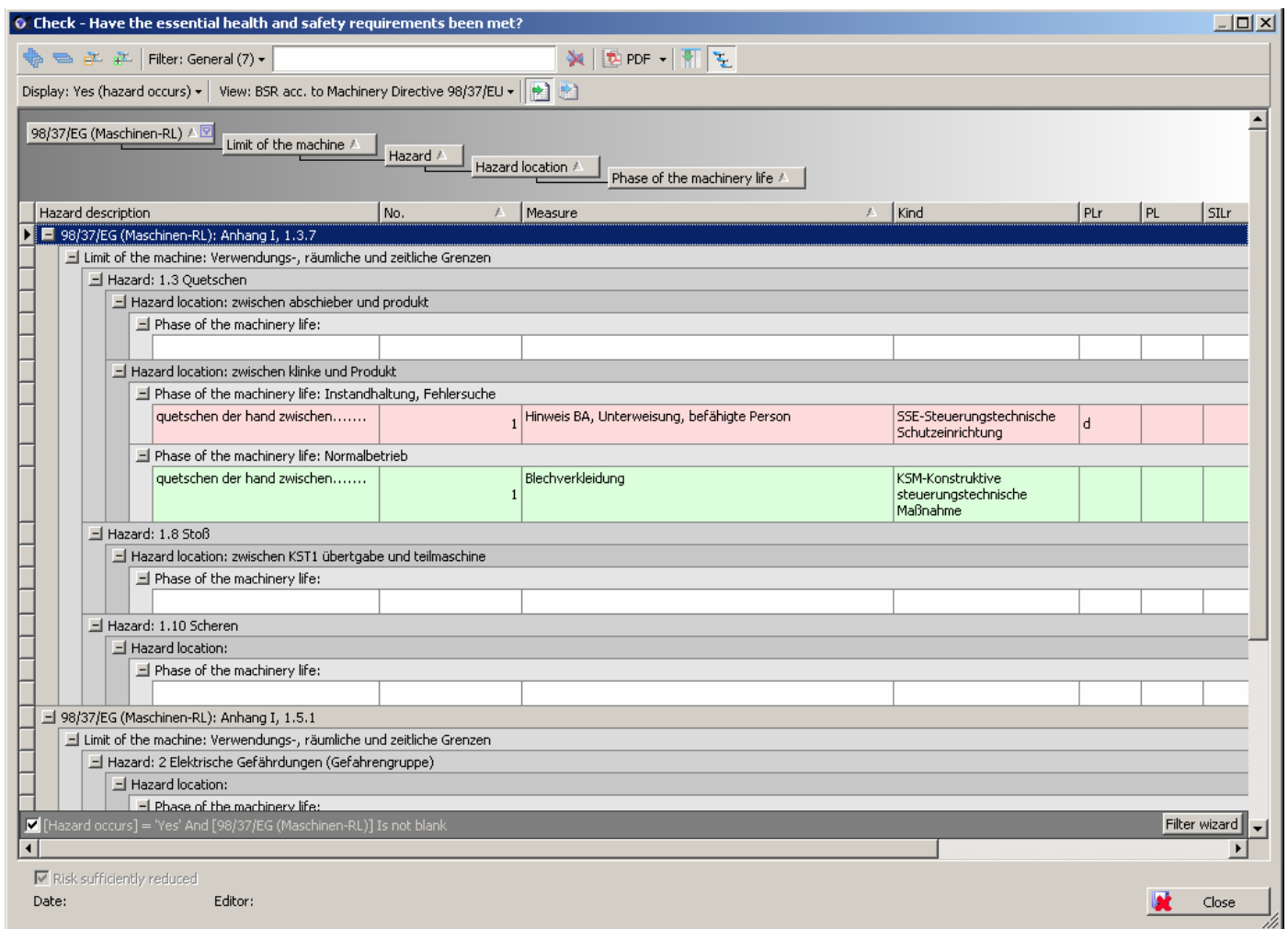
Evaluation of the tasks that have not yet been completed and of the tasks defined in the hazard analysis or risk assessment

With this functionality, we satisfy a frequent customer request that is also covered with the requirements of the internal checks on the manufacture of machinery from Annex VIII of the new machinery directive.

As previously, open tasks ("hold points") that must be marked as "done" before the project can be completed can be defined on the project level.

Now, in addition to each measure defined in the hazard analysis or risk assessment, "tasks" can also be assigned. As a result, it is possible to define in the design phase which points are to be inspected *after* construction of the machine:

Whenever Safexpert is opened, an automatic, user-specific check is performed and a display appears listing projects in which there are still open tasks for the given user.



Check - Have the essential health and safety requirements been met?


Filter: General (7) | Display: Yes (hazard occurs) | View: BSR acc. to Machinery Directive 98/37/EU

98/37/EG (Maschinen-RL) | Limit of the machine | Hazard | Hazard location | Phase of the machinery life

Hazard description	No.	Measure	Kind	PLr	PL	SILr
98/37/EG (Maschinen-RL): Anhang I, 1.3.7						
Limit of the machine: Verwendungs-, räumliche und zeitliche Grenzen						
Hazard: 1.3 Quetschen						
Hazard location: zwischen abschieber und produkt						
Phase of the machinery life:						
Hazard location: zwischen klinke und produkt						
Phase of the machinery life: Instandhaltung, Fehlersuche						
quetschen der hand zwischen.....	1	Hinweis BA, Unterweisung, befähigte Person	SSE-Steuerungstechnische Schutzeinrichtung	d		
Phase of the machinery life: Normalbetrieb						
quetschen der hand zwischen.....	1	Blechverkleidung	KSM-Konstruktive steuerungstechnische Maßnahme			
Hazard: 1.8 Stoß						
Hazard location: zwischen KST1 übertgabe und teilmaschine						
Phase of the machinery life:						
Hazard: 1.10 Scheren						
Hazard location:						
Phase of the machinery life:						
98/37/EG (Maschinen-RL): Anhang I, 1.5.1						
Limit of the machine: Verwendungs-, räumliche und zeitliche Grenzen						
Hazard: 2 Elektrische Gefährdungen (Gefahrengruppe)						
Hazard location:						
Phase of the machinery life:						
<input checked="" type="checkbox"/> [Hazard occurs] = 'Yes' And [98/37/EG (Maschinen-RL)] Is not blank						

Risk sufficiently reduced

Date: Editor: Filter wizard

 Close

By means of easy-to-use grouping and filtering functions, additional evaluations can be performed. For example:

- For which people and in which projects are there overdue items?
- What tasks exist for which hazard locations?