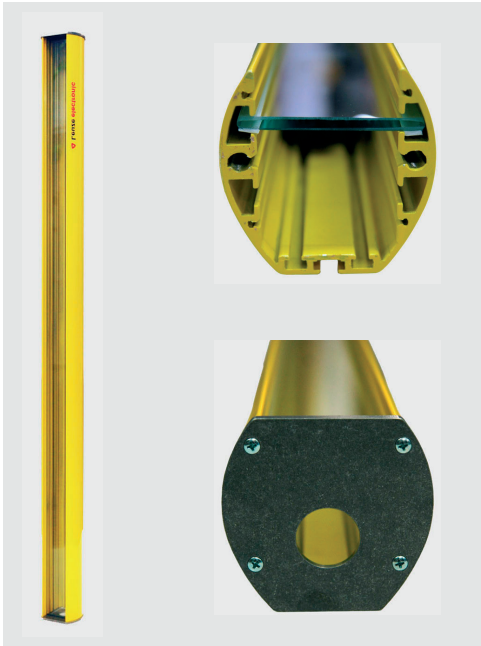


DCW-G

Art. no. 601931



Device Mounting Columns with protective screen for Safety Light Curtains and Multiple Light Beam Safety Devices

The DCW-G Device Mounting Columns are used for the protected mounting of Multiple Light Beam Safety Devices and Safety Light Curtains. They enable vertical alignment via the rear-side slot and protect the sensors against damaging and splash water.

DCW-Gs are ideal for accepting COMPACT, COMPACT*plus* without connection to the local interface and SOLID Multiple Light Beam Safety Devices or Safety Light Curtains up to 1800 mm protective height.

DCW-G is not suitable for Multiple Light Beam Safety Devices of series MLD.

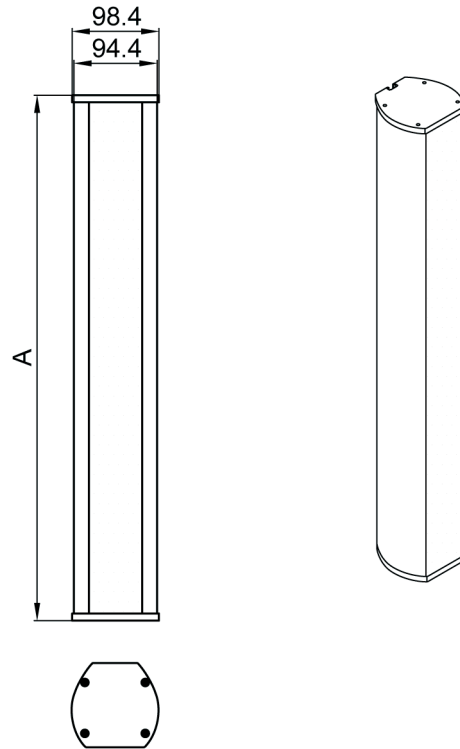
Features

- Robust profile construction in high quality design
- Aluminum cover on both ends
- Wall mounting via rear-side slot
- Glass protective screen (6 mm)
- Easy mounting and fast vertical alignment

Use

Protected fixing of Multiple Light Beam Safety Devices and Safety Light Curtains with wall mounting.

Dimensional drawing



Dimensions table

Article	Dim. A mm
DCW-1000G	1056
DCW-1300G	1356
DCW-1600G	1656
DCW-1900G	1956

Subject to change without prior notice

Application

DCW-1000G for:

2-beam COMPACT(*plus*) Multiple Light Beam Safety Devices and COMPACT(*plus*) and SOLID Safety Light Curtains up to 900 mm

DCW-1300G additionally for:

3 and 4-beam COMPACT(*plus*) Multiple Light Beam Safety Devices and COMPACT(*plus*) and SOLID Safety Light Curtains up to 1200 mm

DCW-1600G additionally for:

COMPACT(*plus*) and SOLID Safety Light Curtains up to 1500 mm

DCW-1900G additionally for:

COMPACT(*plus*) and SOLID Safety Light Curtains up to 1800 mm

Ordering information

Art. no.	Article
549510	DCW-1000G
549513	DCW-1300G
549516	DCW-1600G
549519	DCW-1900G

Accessories

Art. no.	Article
424416	BT-P40 Clamping Bracket (delivery includes 2 pieces)

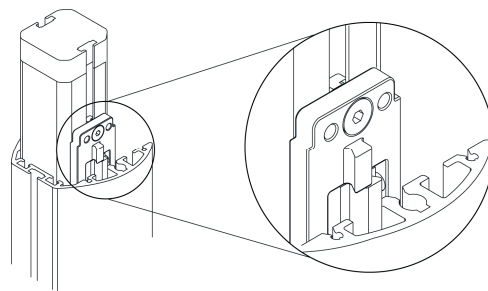
Installation

Required parts and tools:

Phillips head screwdriver
4 mm Allen wrench
10 mm socket wrench
Spirit level

Work steps:

1. Unscrew the top (closed) and the bottom cover (with drill hole) and carefully push the glass screen out.
2. Fix the clamping brackets included with the delivery using the sliding nuts on the device. The Allen screw for clamping the bracket in the slot must point directly at you.
3. Insert the device with the clamping brackets into the rear slot and fix it with the Allen screws accessible from the front, so that the connection area still protrudes from the column.



4. Pass the connecting cable through the drill hole on the bottom cover and connect it on the device.
5. Loosen the Allen screws on the clamping brackets, put the device in its final position and tighten the Allen screws again.
6. Push the glass screen back again in the front slot of the column, so that the seal is on the inside.
7. Screw the cover back on.
8. Fix the column with the inserted device using the sliding nuts in the rear-side slot to the intended fixing wall.
9. Switch the devices in the columns on and check the correct alignment. Optimum alignment has been achieved when the dirt and error signal displays of the devices do not light.